

Preferences

Introduction

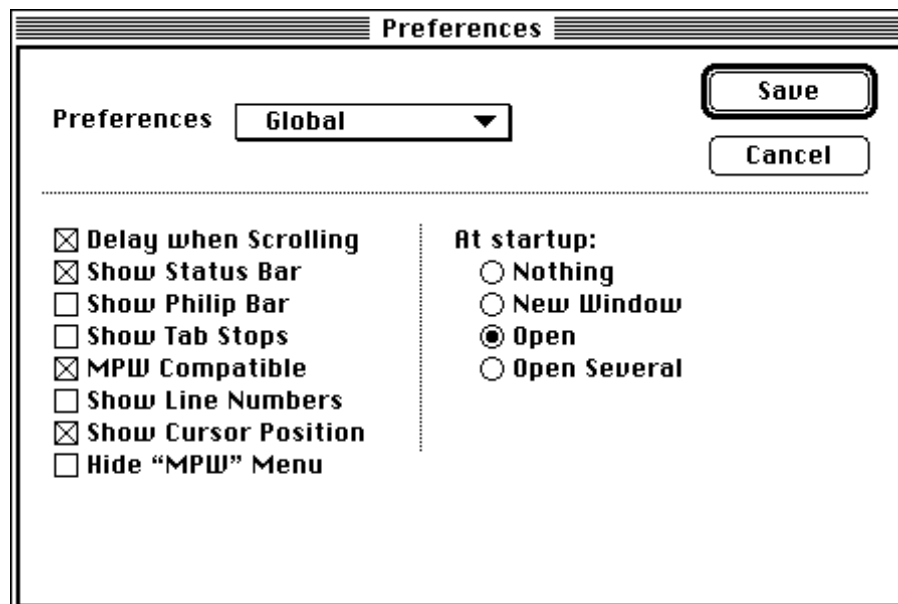
This chapter explains the use of the “Preferences...” dialog. The “Preferences...” command is found under the **Edit** menu.

BBEdit's behavior is in part controlled by sets of preferences. You can change these preferences to suit your own needs or your personal taste.

The Preferences Dialog

To bring up the Preferences dialog, choose “Preferences...” from the **Edit** menu, or double-click on your BBEEdit Prefs file. (This may not be convenient, since the BBEEdit Prefs file usually resides somewhere within the System Folder.)


The Preferences Dialog looks like this:



The popup menu next to the “Preferences” text determines which section of the preferences you’re looking at. If you click on “Save”, all of the preferences settings will be saved to the “BBEedit Prefs” file. If you click on “Cancel”, the existing preferences will be left alone, and any changes you’ve made in the Preferences settings will be discarded.

Global Preferences

These settings (shown above) affect BBEdition's overall appearance and behavior.

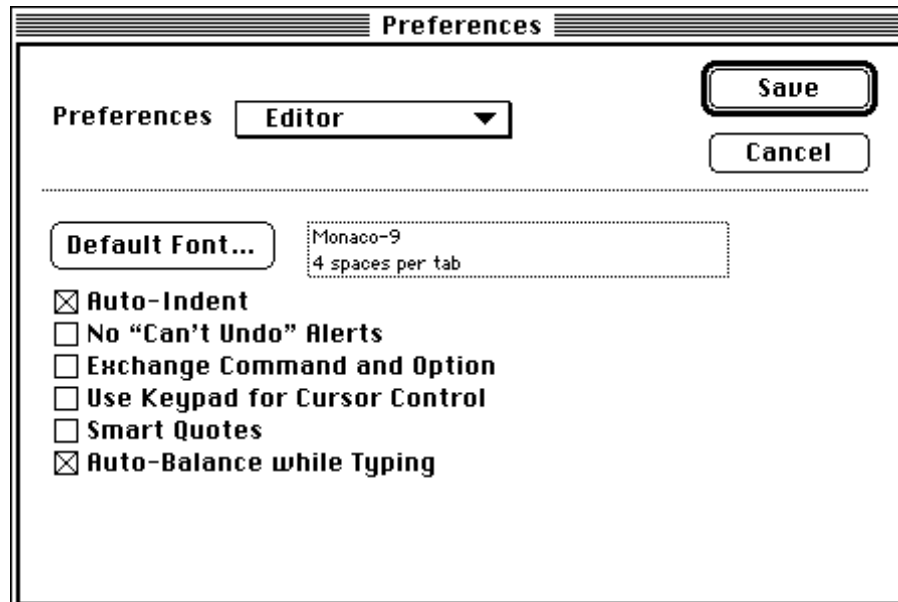
- **Delay When Scrolling** makes BBEdition wait a tenth of a second when you click in the arrows of a scrollbar before scrolling the text in a document window. This is most useful under System 6 on faster machines; often several lines will go by before your reflexes allow you to let go of the mouse button. System 7 offers a "scrolling throttle", so this setting may be turned off.
- **Show Status Bar** causes the status bar to be visible within all editing windows. (See "Editing Text With BBEdition" for a description of the status bar.) This option is on by default; you can turn it off if you have a small screen and screen "real estate" is at a premium.
- **Show Philip Bar** draws a vertical gray line in the status bar at the point where the visible editing area ends on a 9-inch "classic" screen. See the "Wrapping" section of "Editing Text with BBEdition" for more details. This option is dimmed if "Show Status Bar" is turned off.
- **Show Tab Stops** places tick marks in the status bar to indicate the position of tab stops in each editing window. This option is dimmed if "Show Status Bar" is turned off.
- **MPW Compatible** makes BBEdition emulate some aspects of the MPW Shell's behavior. If it's turned on, \mathbb{A} -A is used for Select All, \mathbb{G} -G for Find Again, \mathbb{H} -H for Find Selection, \mathbb{J} -J for Go To Line..., and \mathbb{T} -T for Replace and Find Again. If it's turned off, these keyboard equivalents become the same as for older versions of THINK C, with some minor changes: \mathbb{A} -A is Find Again, \mathbb{Y} -Y is Replace and Find Again, \mathbb{T} -T is Find In Next File, and \mathbb{G} -G is Go To Line...
- **Show Line Numbers** places line numbers along the left edge of each editing window.
- **Show Cursor Position** places the cursor-position display at the lower left corner of each editing window; this display shows the position of the insertion point, or the last-changed end of the selection range.
- **Hide "MPW" Menu** removes the  menu from the menu bar. If you're not using ToolServer, or you don't know what ToolServer is, you can turn on this option to save a little space in the menu bar. If you're not using System 7, this menu will be hidden, and "Hide "MPW" Menu" will be disabled.

The "Startup Action" radio buttons control what BBEdition does when it's launched by some means other than double-clicking on a BBEdition document, or by dragging and dropping some item onto BBEdition itself (under System 7).

- If **Nothing** is selected, BBEdition will take no action at startup. This is handy if BBEdition regularly gets launched into the background, or is launched by some scripting utility which will then start feeding commands to BBEdition directly.
- **New Window** causes BBEdition to bring up a new untitled window, as if the "New" command on the **File** menu had been chosen.
- **Open** causes BBEdition to bring up an "Open..." dialog, as if the "Open..." command on the **File** menu had been chosen.
- **Open Several** causes BBEdition to bring up the "Open Several..." dialog, as if that command had been chosen.

Editor Preferences

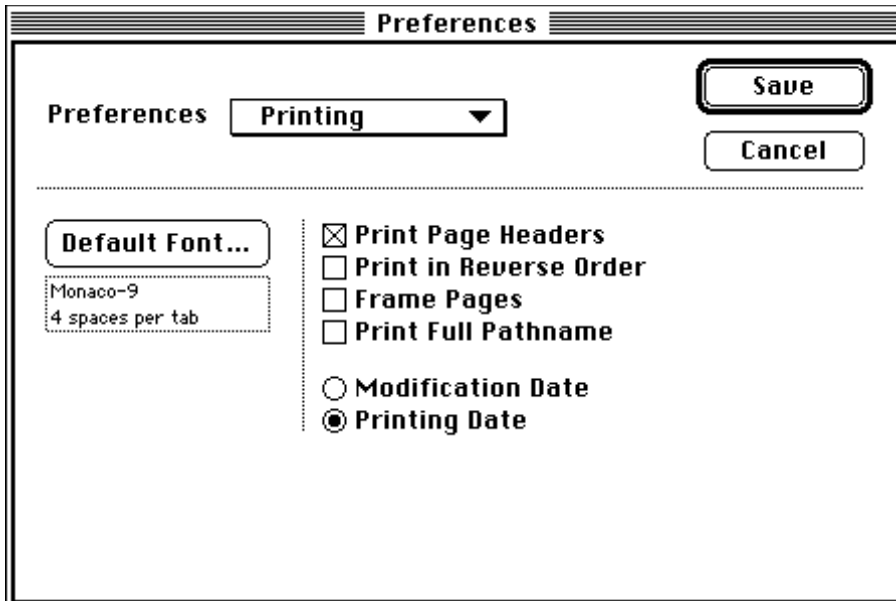
These preferences control BBEdit's editing and keyboard behavior.



- The “**Default Font**” button sets the font which will be used to display the text in newly created windows, and for documents which have no saved state information.
- If **Auto-Indent** is turned on, BBEdit will indent to the start of the preceding line whenever you type the “Return” key on the keyboard. This is useful for programmers and for reverse-indenting text. It may be less convenient if you’re using BBEdit for composing prose.
- Ordinarily, actions such as Entab, Detab, Zap Gremlins, and Replace All are not undoable, and BBEdit will alert you if you are about to perform a non-undoable action. If you aren’t concerned about being able to undo these actions, and don’t want BBEdit to alert you, turn on the ‘**No “Can’t Undo” Alerts**’ check box, and BBEdit will not alert you of these actions.
- **Exchange Command and Option** reverses the meaning of the Command and Option keys when used with the left and right arrow keys. See “Editing Text with BBEdit” for more details.
- If **Use Keypad for Cursor Control** is checked, the keys on the numeric keypad (on keyboards that have them) will move the cursor. See “Editing Text With BBEdit” for more details.
- **Smart Quotes** is used to determine the default value of the Smart Quotes setting for newly created windows and for documents saved with state information other than “BBEdit”.
- If **Auto-Balance While Typing** is turned on, BBEdit will flash matching parentheses, curly braces, and brackets as you type them.

Printing Preferences

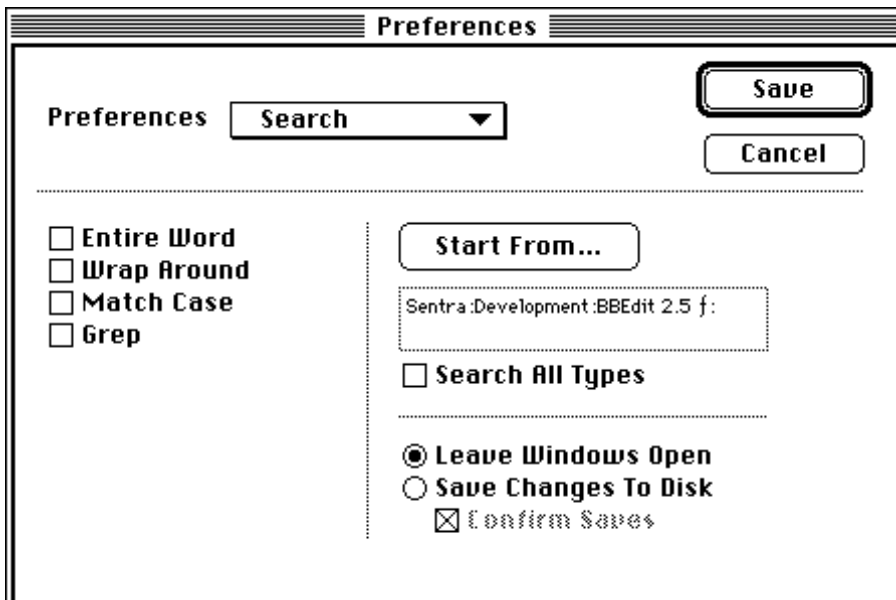
These settings provide the default print settings for new windows and for documents which have saved state information other than BBEdition's.



These settings correspond to the same settings on the "Options..." dialog which can be brought up from the Print... dialog.

Search Preferences

These settings provide the defaults for text searching and multi-file searching. The options in this dialog correspond to their counterparts in the Find... and the Multi-File Search Options dialog.

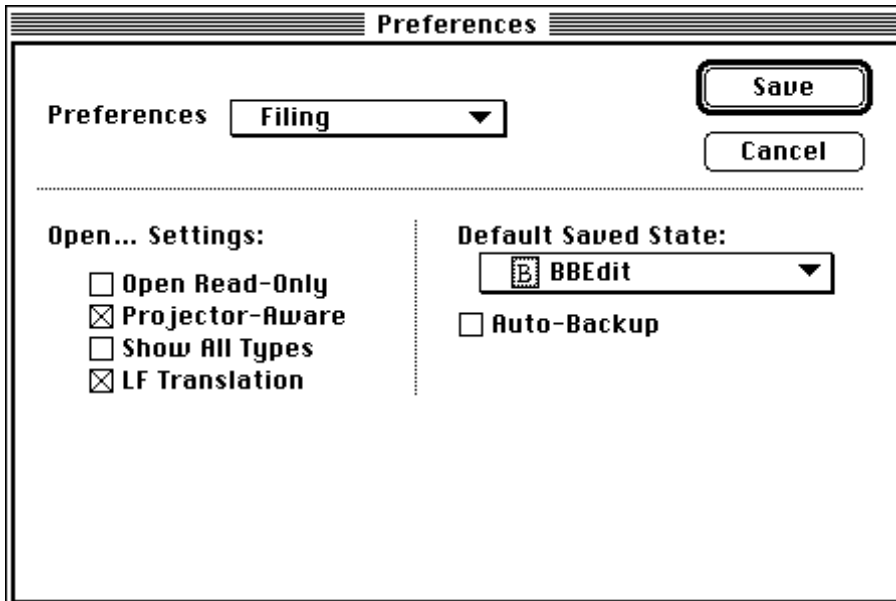


The "Start From..." button sets the default starting directory for Directory Scan multi-file

searches.

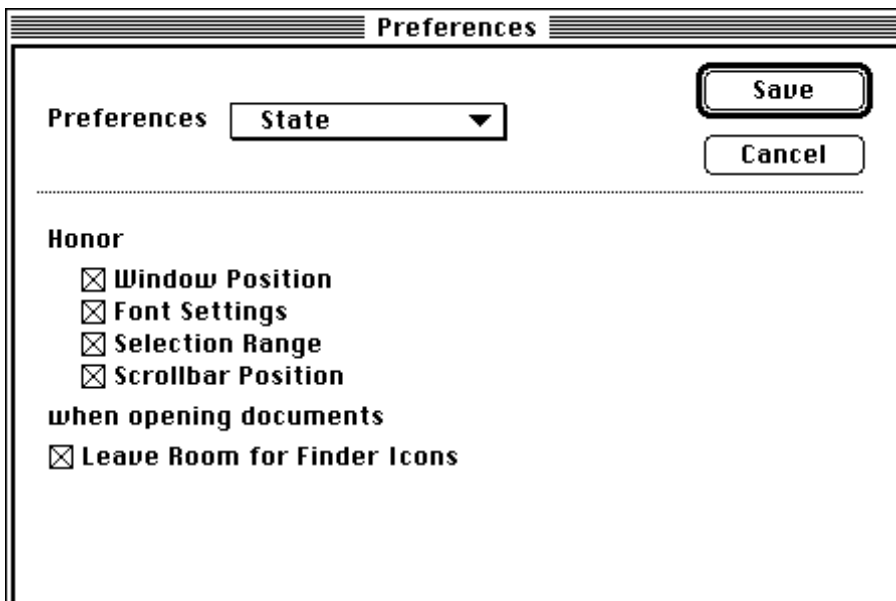
Filing Preferences

The settings in this part of the Preference dialog control the default settings for the Open... and Open Several... dialogs. The "Default Saved State" popup menu determines what state information will be saved by default when you choose "Save As..." for a new window or for a file with no saved state information. If "Auto-Backup" is checked, a backup will automatically be made of a file every time it is saved.



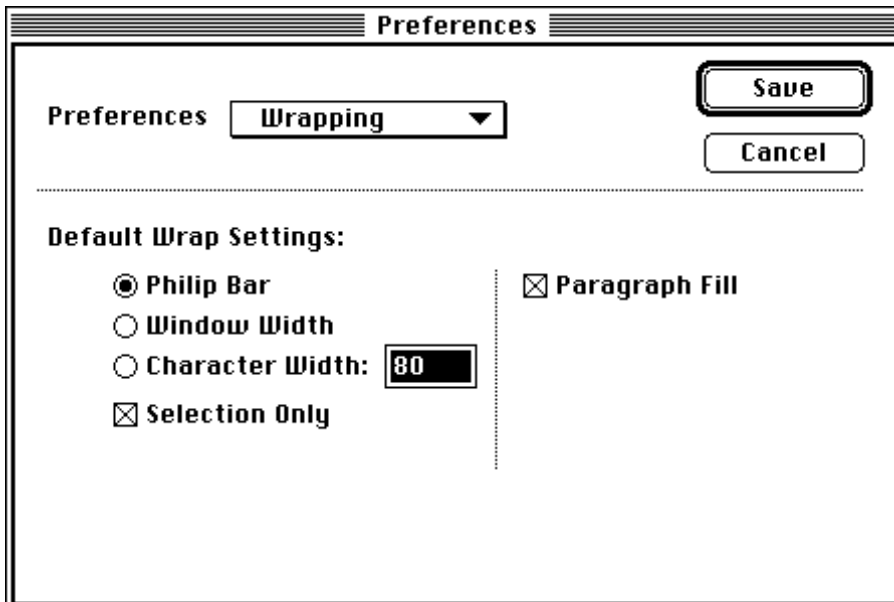
State Preferences

These settings control what parts of a file's saved state are honored whenever a file with saved state information is opened. In some cases, it may be desirable to ignore one of these aspects of the saved state. If the "Leave Room for Finder Icons" is checked, BBEdition will make certain that there's enough space below and to the right of any window so that icons on the desktop can be seen when you're running under MultiFinder or System 7.

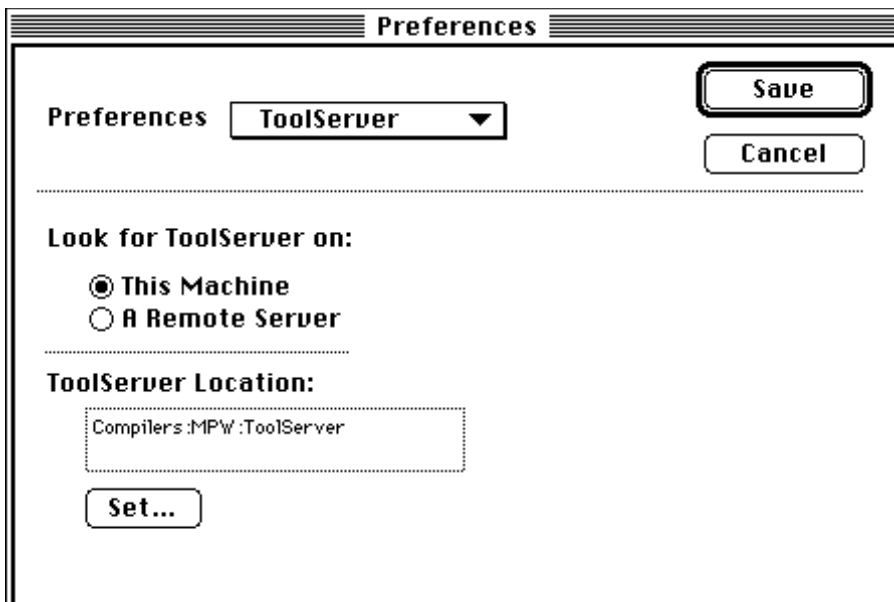


Wrapping Preferences

These settings are the default settings for the Wrap... dialog.



ToolServer Preferences

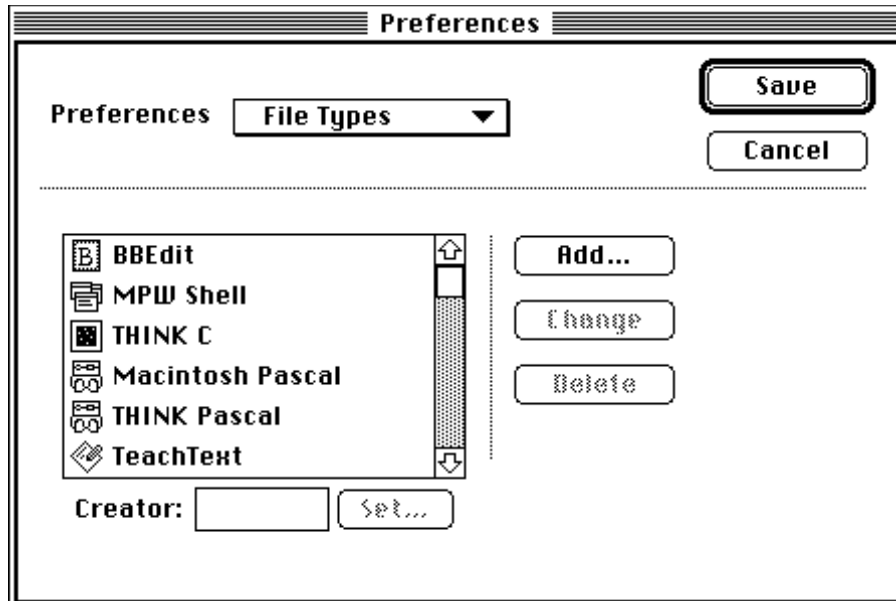


This set of preference controls how BBEEdit locates the ToolServer application. If you won't be using ToolServer, or don't know what ToolServer is, you can skip this section of the preferences.

You may find it desirable to use a ToolServer that's always running on a specific machine on the network. In this case, click the "A Remote Server" radio button, and click the "Set..." button to choose the remote ToolServer. Otherwise, click the "This Machine" radio button, and use the "Set..." button to select the actual ToolServer application that BBEEdit will use.

File Types

This section of the Preferences allows you to modify the list of file creators that appears in the "File Creator" popup menu of the "Save As..., Options..." dialog box.



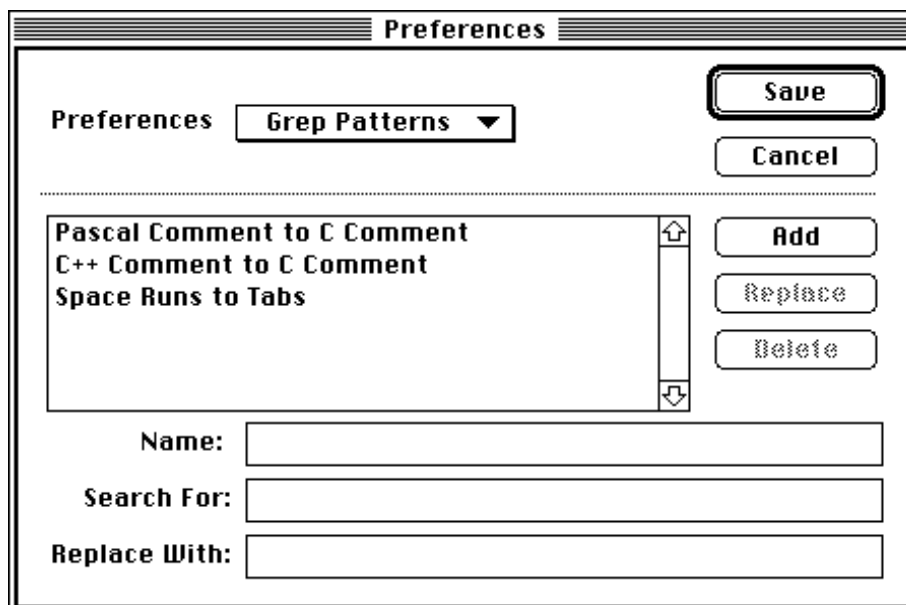
To add a new application's file creator to the list, click the "Add..." button, and choose the application. To change an application's creator signature, click on an application name in the list, enter a new four-letter code in the text field next to "Creator...", and click the "Change" button. You can use the "Set..." button to pick an application and enter its creator code in the text field for you. To remove an application creator from the list, click on an application name, and click the "Delete" button.

The creators for "BBEdit" and "Generic Text File" are built into BBEdit and cannot be changed or deleted.

Note: Icons will only be placed next to the built-in application creators that ship with BBEdit.

Grep Patterns

This section of the Preferences dialog allows you to modify the list of regular expressions which appears in the popup menu next to the "Grep" check box in the "Find..." dialog. The scrolling list box shows the names of the installed patterns. When you click on one, the text fields below the list will be filled in with its name, search pattern, and replace pattern. You can change any of these text fields, and click "Change" to replace the selected pattern with the changed one. You can also enter new information in the text fields and click "Add" to add a new pattern, or select a pattern and click "Delete" to remove it from the list.



Note: You can install a pattern with an empty replace pattern, which is useful just for locating text which matches a particular regular expression.

For more information in Grep, see the "Searching" chapter.